



1 Frank Ogawa Plaza, 9<sup>th</sup> Floor, Oakland CA 94612

[www.oaklandculturalarts.org](http://www.oaklandculturalarts.org)

---

## UPTOWN ART PARK CALL FOR SCULPTURES 2012-13 OPENING EXHIBITION

**Eligibility: Northern California Bay Area Artists**  
**Deadline for Submission: September 18, 2012**



*"Cubatron" by Mark Lottor. Telegraph Avenue & 19<sup>th</sup> Street, Uptown Unveiled festival, June 2009, Oakland, CA.*

### **Opportunity for Existing Sculpture**

The City of Oakland Public Art Program seeks existing sculptures from Bay Area artists for display in the opening exhibition at the Uptown Art Park. Sculptures incorporating light, media arts, and/or kinetic elements are particularly desired. Six to nine sculptures, in addition to one work already committed, will be selected for the exhibition. Each applicant may submit up to three sculptures for consideration. Works will be installed in October, 2012, and will remain on display for 6 to 12 months. Artists chosen to participate will receive a stipend of \$1,500 per work.

### **Project Overview**

The Uptown Art Park is a new, temporary art exhibition and cultural events space developed by the City of Oakland's Public Art Program, Cultural Arts & Marketing Division, in partnership with the Office of Neighborhood Investment. The park is made possible through a matching grant from the National Endowment for the Arts. The Uptown Art Park will be located at Telegraph Avenue and 19<sup>th</sup> Street, a

## **Uptown Art Park Call for Sculptures**

high-visibility site in the heart of the Uptown, Oakland's historic and re-emerging arts, entertainment, dining and retail district.

This is the initial call for art for the Uptown Art Park. The Public Art Program is developing future opportunities for art at the park, including new artwork commissions, guest-curated exhibits, temporary projects, media-based projects and interdisciplinary performances.

### **Project Site Details**

The Uptown Art Park has up to nine (9) opportunity sites still available for sculptures in the opening exhibition on concrete sculpture pads ranging from eight (8) to eighteen (18) feet in diameter. **See *attached park layout plan*** (page 5). This Call is seeking sculptures to be displayed on the six (6) art pedestals indicated along 19<sup>th</sup> Street. Additional lightweight sculptures may be considered for installation along the perimeter of Henry J. Kaiser Park, located immediately west of the Uptown Art Park site.

The sculpture *Bike Bridge*, a collaboration between artist Michael Christian, partner organization The Crucible and twelve youth participants, sponsored by the Black Rock Arts Foundation, will be sited in the park space along Telegraph Avenue as part of the opening exhibition.

Electricity will be available onsite for sculptures with intrinsic and extrinsic lighting, or kinetic elements requiring an outside source of power.

The estimated installation window will be October 15 through October 25, 2012. Artists are responsible for delivery, installation, and removal of their sculptures. Assistance with the installation of work will be considered on a case-by-case basis, upon request. A representative from the City of Oakland must be present during installation.

### **Permits**

The selected sculptures must be permitted through the City of Oakland (Building Services - Permit Center, 250 Frank H. Ogawa Plaza). Public Art staff will assist artists with the permit application process and cover permit expenses.

### **Stipend**

Artists chosen to participate will receive a stipend of \$1,500 per work.

### **Eligibility**

This call is open to practicing, professional artists or artist teams **living or working in the Northern California Bay Area region, defined as the counties of Alameda, Contra Costa, Marin, Napa, San Francisco, Santa Clara, San Mateo, Santa Cruz, Solano and Sonoma.** Oakland-based artists are particularly encouraged to apply.

### **Deadline for Submission**

September 18, 2012, 11:59 p.m.

### **To Submit Work**

Send images of up to three (3) existing sculptures that will be available for installation in mid-October, 2012. You may also submit photos or drawings of pending but incomplete sculptures, if these works will be complete and available for installation by mid-October, 2012.

To submit your application for consideration, please send it online. Use a program such as Dropbox ([www.dropbox.com](http://www.dropbox.com)), Sendthisfile (<http://www.sendthisfile.com>) or YouSendIt ([www.yousendit.com](http://www.yousendit.com)) to submit files.\*

**SUBMIT YOUR WRITTEN APPLICATION IN ONE PDF OR MICROSOFT WORD FILE, IN ADDITION TO THE IMAGE FILES.** Each application packet must include:

- Name
- Address
- Phone
- Email address
- Statement of Interest (two paragraphs maximum)
- Brief resume or bio (two pages maximum)
- Image list, including details and dimensions of works depicted, and any special installation equipment requirements
- High-resolution digital images of available sculptures in jpg format (up to 3 works; up to 10 images maximum)

\*Submit your application, via an above-listed or similar program, to Steven Huss, Cultural Arts Manager, at [shuss@oaklandnet.com](mailto:shuss@oaklandnet.com), or Kristen Zaremba, Senior Public Art Project Manager, at [kzaremba@oaklandnet.com](mailto:kzaremba@oaklandnet.com).

### Review Criteria

Work will be juried in a public selection panel meeting. In rating finalists, the panel will award an extra point to artists who live and/or work in Oakland. The selected sculptures must be approved by the Public Art Advisory Committee before they are confirmed for inclusion in the exhibition.

The panel will review submitted works with consideration for:

- Artistic innovation, creativity and originality
- Appropriateness of artist's style as it relates to Uptown Art Park goals, setting, scale and scope
- Appropriateness of medium, technical range and ability for this location
- Durability of materials
- Issues of public safety

### Timeline

- |  |                                       |
|--|---------------------------------------|
| • <b>Application deadline</b>                  | <b>September 18, 2012, 11:59 p.m.</b> |
| • Panel Review Meeting                         | Late September, 2012                  |
| • Public Art Advisory (PAAC) Review & Approval | October 1, 2012                       |
| • Selected Artists Notified                    | Week of October 1, 2012               |
| • Installation of Selected Sculptures          | Mid-October, 2012 *                   |
| • Exhibition Opens                             | Late October, 2012                    |

\* Contingent upon park construction schedule

## **PUBLIC ART PROGRAM POLICIES**

### **Acceptance of Proposals**

The City of Oakland Cultural Arts & Marketing Division reserves the right to reject all applications and/or subsequent design proposals or to augment the pool of applicants by direct invitation as needed.

### **Americans with Disabilities Act**

The selected artist(s) will be required to comply with the Americans with Disabilities Act in addition to related federal, state and local codes.

### **Other Requirements**

Selected artists or artist teams, once approved by the Public Art Advisory Committee, may be asked to enter into a contract with the City of Oakland for the duration of the project. All proposed locations and concepts for artworks are subject to approval by the City and/or other representatives. Depending on the specific scope of the project, prior to the issuance and throughout the duration of the contract, the artist may be required to secure and maintain various types of insurance, including Automobile Liability, General Liability, Fine Arts and other insurance as required by the City.

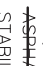


All information contained herein does not constitute either an expressed or implied contract and these provisions are subject to change.

For more information about the Uptown Art Park Call to Artists, or the City of Oakland Public Art Program, please contact Steven Huss, Cultural Arts Manager, at [shuss@oaklandnet.com](mailto:shuss@oaklandnet.com) / 510.238.4949, or Kristen Zaremba, Senior Public Art Project Manager, at [kzaremba@oaklandnet.com](mailto:kzaremba@oaklandnet.com) / 510.238.2155.

This Call to Artists is also available online on the Cultural Arts & Marketing Division's website at [www.oaklandculturalarts.org](http://www.oaklandculturalarts.org).

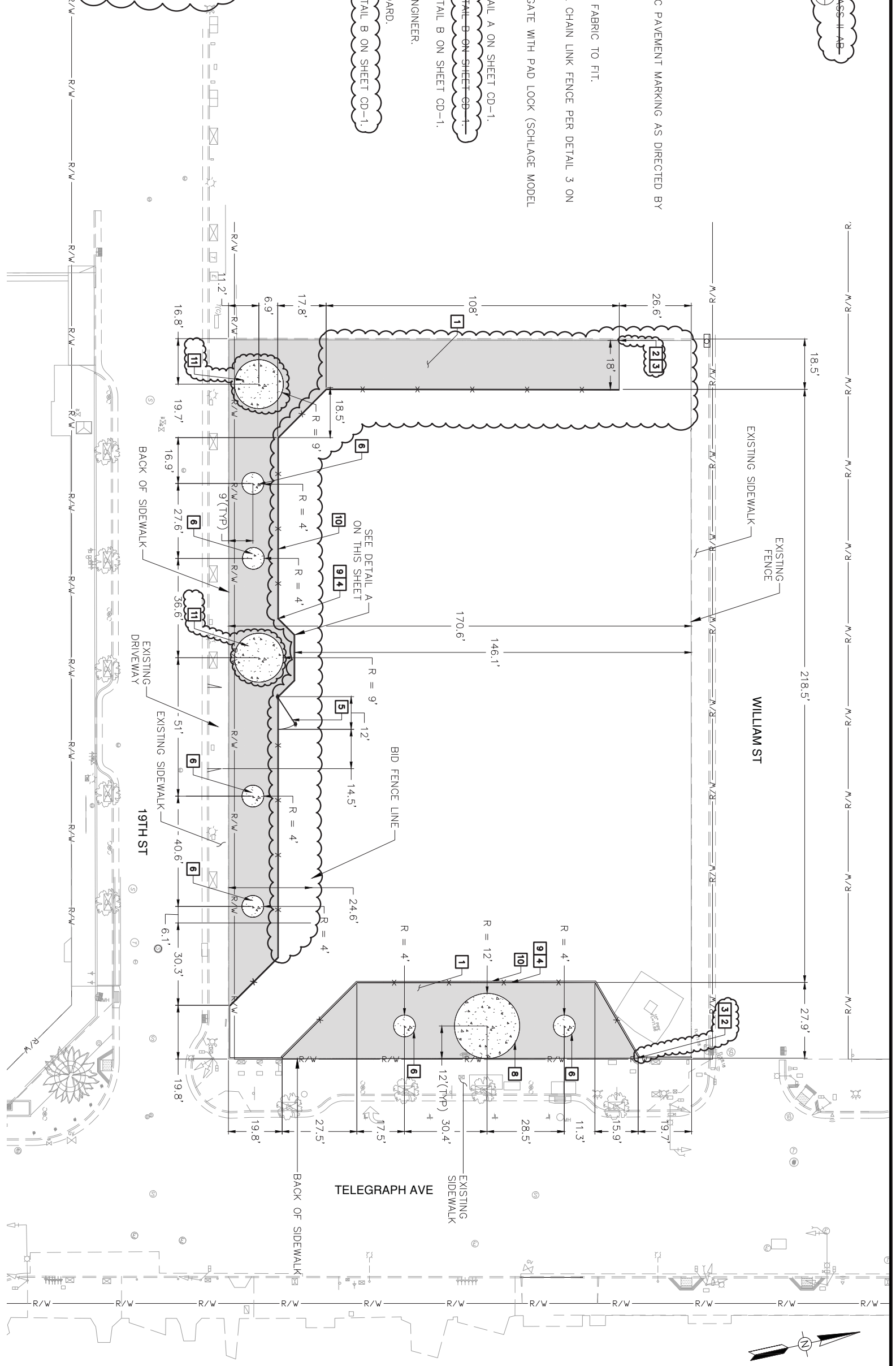
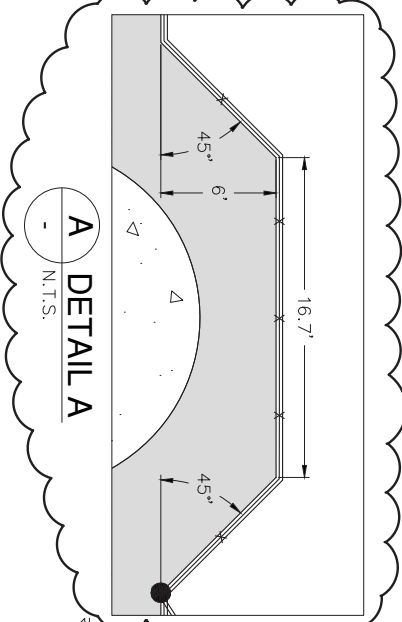
**ATTACHMENT: Park Layout Plan – page 5**

**LEGEND**

-  ASPHALT CONCRETE PAVEMENT WITH 2" AG OVER 4" CLASS II AB STABILIZED DECOMPOSED GRANITE (SDG). SEE DETAIL (A) N.T.S.
-  PCC ART PEDESTAL
-  NEW 6-FOOT HIGH CHAIN LINK FENCE

**NOTES:**

- 1** INSTALL UP TO 2,000 SF OF MULTI-COLORED THERMOPLASTIC PAVEMENT MARKING AS DIRECTED BY ENGINEER.
- 2** TERMINATE FENCE AT NEAREST FENCE LINE POST.
- 3** REPLACE LINE POST WITH NEW CORNER POST MODIFY FENCE FABRIC TO FIT.
- 4** FURNISH AND INSTALL NEW 6-FOOT HIGH GALVANIZED STEEL CHAIN LINK FENCE PER DETAIL 3 ON SHEET CD-2.
- 5** FURNISH AND INSTALL 6-FOOT HIGH, 12-FOOT WIDE SWING GATE WITH PAD LOCK (SCHLAGE MODEL KS4303200 OR EQUAL) PER DETAIL 2 ON SHEET CD-2.
- 6** CONSTRUCT NEW 8-FOOT DIAMETER ART PEDESTAL PER DETAIL A ON SHEET CD-1.
- 7** CONSTRUCT NEW 12-FOOT DIAMETER ART PEDESTAL PER DETAIL B ON SHEET CD-1.
- 8** CONSTRUCT NEW 24-FOOT DIAMETER ART PEDESTAL PER DETAIL B ON SHEET CD-1.
- 9** COVER NEW FENCE WITH SPECIAL FABRIC AS DIRECTED BY ENGINEER.
- 10** FURNISH AND INSTALL 2X8 YP TREATED LUMBER HEADER BOARD.
- 11** CONSTRUCT NEW 18-FOOT DIAMETER ART PEDESTAL PER DETAIL B ON SHEET CD-1.



**CONFORM SET**



SCALE: 1" = 20'  
 HOR: \_\_\_\_\_  
 VERT: \_\_\_\_\_  
 DATE: 8/6/2012

CITY OF OAKLAND  
 UPTOWN ART PARK IMPROVEMENTS PROJECT

CITY OF OAKLAND  
 DESIGN AND CONSTRUCTION SERVICES DEPARTMENT  
 250 FRANK H. OGDEN PLAZA, SUITE 4314 OAKLAND CA 94612  
 (510) 238-5457 FAX (510) 235-7227  
 PROJECT NO. P130191



**DKS Associates**  
 TRANSPORTATION  
 1970 BROADWAY, SUITE 540  
 OAKLAND, CALIFORNIA 94612  
 (510) 782-2081  
 CHECKED BY: TJK  
 DESIGNED BY: FJC, ABH  
 DRAWN BY: FJC, ABH

No.	DATE	BY	REFERENCE

LAYOUT PLAN (LA-1)

SHEET NO. 4 OF 10